



License No. 800025015
FL License # CMTL-0003
CLIA No. 10D1094068

Certificate of Analysis

Compliance Test

Batch # 822-46-1
Batch Date: 2021-05-04
Extracted From: Hemp

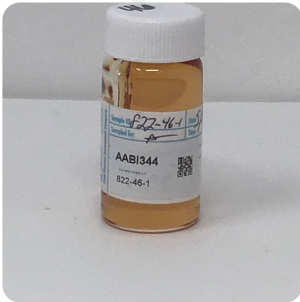
Test Reg State: Oregon

Production Facility:
Production Date: 2021-05-04

Order # DHV210511-050030
Order Date: 2021-05-11
Sample # AABI344

Sampling Date: 2021-05-13
Lab Batch Date: 2021-05-13
Completion Date: 2021-05-21

Initial Gross Weight: 38.370 g



Product Image

Potency
Tested

Pesticides
Passed

Residual
Solvents
Passed

Delta 8/Delta 10 Potency 12

Specimen Weight: 48.650 mg

Analyte	Dilution (1:n)	LOD (%)	LOQ (%)	Result (mg/g)	(%)
Delta-8 THC	100.000	0.000026	0.001	923.900	92.390
Delta-10 THC	1000.000	0.000003	0.001		<LOQ
Delta-9 THC	100.000	0.000013	0.001		<LOQ
CBC	100.000	0.000018	0.001		<LOQ
CBD	100.000	0.000054	0.001		<LOQ
THCV	100.000	0.000007	0.001		<LOQ
THCA-A	100.000	0.000032	0.001		<LOQ
CBN	100.000	0.000014	0.001		<LOQ
CBGA	100.000	0.00008	0.001		<LOQ
CBG	100.000	0.000248	0.001		<LOQ
CBDV	100.000	0.000065	0.001		<LOQ
CBDA	100.000	0.00001	0.001		<LOQ

Tested
(LCUV)

Potency Summary

Total Delta 8 92.390%	Total Delta 10 None Detected
Total THC None Detected	Total CBD None Detected
Total CBG None Detected	Total CBN None Detected
Other Cannabinoids None Detected	Total Cannabinoids 92.390%

Xueli Gao Lab Toxicologist
Ph.D., DABT

Aixia Sun Lab Director/Principal Scientist
D.H.Sc., M.Sc., B.Sc., MT (AAB)



Definitions and Abbreviations used in this report: *Total CBD = CBD + (CBD-A * 0.877), *Total THC = THCA-A * 0.877 + Delta 9 THC, *CBG Total = (CBGA * 0.877) + CBG, *CBN Total = (CBNA * 0.877) + CBN, *Other Cannabinoids Total = CBC + CBDV + THCV + THCV-A, *Total Detected Cannabinoids = CBD Total + CBG Total + CBN Total + THC Total + CBC + CBDV + THCV + THCV-A, *Analyte Details above show the Dry Weight Concentrations unless specified as 12% moisture concentration. (mg/ml) = Milligrams per Milliliter, LOQ = Limit of Quantitation, LOD = Limit of Detection, Dilution = Dilution Factor (ppb) = Parts per Billion, (%) = Percent, (cfu/g) = Colony Forming Unit per Gram (cfu/g) = Colony Forming Unit per Gram, LOD = Limit of Detection, (µg/g) = Microgram per Gram (ppm) = Parts per Million, (ppm) = (µg/g), (aw) = aw (area ratio) = Area Ratio, (mg/Kg) = Milligram per Kilogram, *Measurement of Uncertainty = +/- 5%

This report shall not be reproduced, without written approval, from ACS Laboratory. The results of this report relate only to the material or product analyzed. Test results are confidential unless explicitly waived otherwise. Accredited by a third-party accrediting body as a competent testing laboratory pursuant to ISO/IEC 17025 of the International Organization for Standardization.





License No. 800025015
FL License # CMTL-0003
CLIA No. 10D1094068

Certificate of Analysis

Compliance Test

Batch # 822-46-1
Batch Date: 2021-05-04
Extracted From: Hemp

Test Reg State: Oregon

Production Facility:
Production Date: 2021-05-04

Order # DHV210511-050030
Order Date: 2021-05-11
Sample # AABI344

Sampling Date: 2021-05-13
Lab Batch Date: 2021-05-13
Completion Date: 2021-05-21

Initial Gross Weight: 38.370 g



Pesticides

Specimen Weight: 158.900 mg

Passed
(LCMS/GCMS)

Dilution Factor: 9.440

Analyte	LOQ (ppb)	Action Level (ppb)	Result (ppb)	Analyte	LOQ (ppb)	Action Level (ppb)	Result (ppb)
Abamectin	28.23	300	<LOQ	Acephate	30	3000	<LOQ
Acequinocyl	48	2000	<LOQ	Acetamiprid	30	3000	<LOQ
Aldicarb	30	100	<LOQ	Azoxystrobin	10	3000	<LOQ
Bifenazate	30	3000	<LOQ	Bifenthrin	30	500	<LOQ
Carbaryl	10	500	<LOQ	Chlorfenapyr	48	100	<LOQ
Chlorpyrifos	30	100	<LOQ	Clofentazine	30	500	<LOQ
Coumaphos	30	100	<LOQ	Cyfluthrin	30	1000	<LOQ
Cypermethrin	30	1000	<LOQ	Daminozide	30	100	<LOQ
Diazinon	30	200	<LOQ	Dichlorvos	30	100	<LOQ
Dimethoate	30	100	<LOQ	Dimethomorph	30	3000	<LOQ
Ethoprophos	30	100	<LOQ	Etofenprox	30	100	<LOQ
Etoxazole	30	1500	<LOQ	Fenhexamid	30	3000	<LOQ
Fenoxycarb	30	100	<LOQ	Fenpyroximate	30	2000	<LOQ
Fipronil	30	100	<LOQ	Flonicamid	30	2000	<LOQ
Fludioxonil	30	3000	<LOQ	Hexythiazox	30	2000	<LOQ
Imazalil	30	100	<LOQ	Imidacloprid	30	3000	<LOQ
Kresoxim Methyl	30	1000	<LOQ	Malathion	30	2000	<LOQ
Metaxyl	10	3000	<LOQ	Methiocarb	30	100	<LOQ
Methomyl	30	100	<LOQ	Mevinphos	30	100	<LOQ
Myclobutanil	30	3000	<LOQ	Naled	30	500	<LOQ
Oxamyl	30	500	<LOQ	Pacllobutrazol	30	100	<LOQ
Parathion-methyl	48	100	<LOQ	Pentachloronitrobenzene	30	200	<LOQ
Permethrin	30	1000	<LOQ	Phosmet	30	200	<LOQ
Piperonylbutoxide	30	3000	<LOQ	Prallethrin	30	400	<LOQ
Propiconazole	30	1000	<LOQ	Propoxur	30	100	<LOQ
Pyrethrins	30	1000	<LOQ	Pyridaben	30	3000	<LOQ
Spinetoram	30	3000	<LOQ	Spiromesifen	30	3000	<LOQ
Spirotetramat	30	3000	<LOQ	Spiroxamine	30	100	<LOQ
Tebuconazole	30	1000	<LOQ	Thiacloprid	30	100	<LOQ
Thiamethoxam	30	1000	<LOQ	Trifloxystrobin	30	3000	<LOQ

Xueli Gao
Xueli Gao Lab Toxicologist
Ph.D., DABT

Aixia Sun
Aixia Sun Lab Director/Principal Scientist
D.H.Sc., M.Sc., B.Sc., MT (AAB)



Definitions and Abbreviations used in this report: *Total CBD = CBD + (CBD-A * 0.877), *Total THC = THCA-A * 0.877 + Delta 9 THC, *CBG Total = (CBGA * 0.877) + CBG, *CBN Total = (CBNA * 0.877) + CBN, *Other Cannabinoids Total = CBC + CBDV + THCV + THCV-A, *Total Detected Cannabinoids = CBD Total + CBG Total + CBN Total + THC Total + CBC + CBDV + THCV + THCV-A, *Analyte Details above show the Dry Weight Concentrations unless specified as 12% moisture concentration. (mg/ml) = Milligrams per Milliliter, LOQ = Limit of Quantitation, LOD = Limit of Detection, Dilution = Dilution Factor (ppb) = Parts per Billion, (%) = Percent, (cfu/g) = Colony Forming Unit per Gram (cfu/g) = Colony Forming Unit per Gram, , LOD = Limit of Detection, (µg/g) = Microgram per Gram (ppm) = Parts per Million, (ppm) = (µg/g), (aw) = aw (area ratio) = Area Ratio, (mg/Kg) = Milligram per Kilogram, *Measurement of Uncertainty = +/- 5%



This report shall not be reproduced, without written approval, from ACS Laboratory. The results of this report relate only to the material or product analyzed. Test results are confidential unless explicitly waived otherwise. Accredited by a third-party accrediting body as a competent testing laboratory pursuant to ISO/IEC 17025 of the International Organization for Standardization.



License No. 800025015
FL License # CMTL-0003
CLIA No. 10D1094068

Certificate of Analysis

Compliance Test

Batch # 822-46-1
Batch Date: 2021-05-04
Extracted From: Hemp

Test Reg State: Oregon

Production Facility:
Production Date: 2021-05-04

Order # DHV210511-050030
Order Date: 2021-05-11
Sample # AABI344

Sampling Date: 2021-05-13
Lab Batch Date: 2021-05-13
Completion Date: 2021-05-21

Initial Gross Weight: 38.370 g



Residual Solvents - FL (CBD)

Specimen Weight: 109.800 mg

Passed
(GCMS)

Dilution Factor: 1.000

Analyte	LOQ (ppm)	Action Level (ppm)	Result (ppm)	Analyte	LOQ (ppm)	Action Level (ppm)	Result (ppm)
1,1-Dichloroethane	0.16	8	<LOQ	1,2-Dichloroethane	0.04	5	<LOQ
Acetone	2.08	5000	<LOQ	Acetonitrile	1.17	410	<LOQ
Benzene	0.02	2	<LOQ	Butanes	2.5	2000	<LOQ
Chloroform	0.04	60	<LOQ	Ethanol	2.78	5000	<LOQ
Ethyl Acetate	1.11	5000	<LOQ	Ethyl Ether	1.39	5000	<LOQ
Ethylene Oxide	0.1	5	<LOQ	Heptane	1.39	5000	4647.888
Hexane	1.17	290	<LOQ	Isopropyl alcohol	1.39	500	<LOQ
Methanol	0.69	3000	<LOQ	Methylene chloride	2.43	600	<LOQ
Pentane	2.08	5000	<LOQ	Propane	5.83	2100	<LOQ
Toluene	2.92	890	<LOQ	Total Xylenes	2.92	2170	<LOQ
Trichloroethylene	0.49	80	<LOQ				

Xueli Gao
Xueli Gao Lab Toxicologist
Ph.D., DABT

Aixia Sun
Aixia Sun Lab Director/Principal Scientist
D.H.Sc., M.Sc., B.Sc., MT (AAB)



Definitions and Abbreviations used in this report: *Total CBD = CBD + (CBD-A * 0.877), *Total THC = THCA-A * 0.877 + Delta 9 THC, *CBG Total = (CBGA * 0.877) + CBG, *CBN Total = (CBNA * 0.877) + CBN, *Other Cannabinoids Total = CBC + CBDV + THCV + THCV-A, *Total Detected Cannabinoids = CBD Total + CBG Total + CBN Total + THC Total + CBC + CBDV + THCV + THCV-A, *Analyte Details above show the Dry Weight Concentrations unless specified as 12% moisture concentration. (mg/ml) = Milligrams per Milliliter, LOQ = Limit of Quantitation, LOD = Limit of Detection, Dilution = Dilution Factor (ppb) = Parts per Billion, (%) = Percent, (cfu/g) = Colony Forming Unit per Gram (cfu/g) = Colony Forming Unit per Gram, , LOD = Limit of Detection, (µg/g) = Microgram per Gram (ppm) = Parts per Million, (ppm) = (µg/g), (aw) = aw (area ratio) = Area Ratio, (mg/Kg) = Milligram per Kilogram, *Measurement of Uncertainty = +/- 5%



This report shall not be reproduced, without written approval, from ACS Laboratory. The results of this report relate only to the material or product analyzed. Test results are confidential unless explicitly waived otherwise. Accredited by a third-party accrediting body as a competent testing laboratory pursuant to ISO/IEC 17025 of the International Organization for Standardization.