

Lava Kush

Sample ID: 2111CSALA8073.2227

Matrix: Hemp
Type: Industrial Hemp
Sample Size: 13 grams
County Sample ID:

Produced: N/A
Collected: 11/29/2021
Received: 11/29/2021
Completed: 01/05/2022

Physical Address:
Sampler:
Sample Received By:
Sample Tested By: Richard Butunts

Whole Organix LLC
Registration #:
Registrant Name:
Registrant Contact #:



Summary

| | | |
|---------------------------------------|---------------------------------|--|
| 20.7202% Total Cannabinoids | Not Tested Pesticides | Not Tested Residual Solvents |
| Not Tested Microbials | Not Tested Mycotoxins | Not Tested Heavy Metals |

Cannabinoids

Testing method: HPLC-SOP 101

| Analyte | LOD | LOQ | Results | Results |
|------------------|--------|--------|----------------|-----------------|
| | % | % | % | mg/g |
| CBDa | 0.0133 | 0.025 | 18.3100 | 183.0996 |
| CBCA * | 0.0221 | 0.025 | 0.7795 | 7.7953 |
| THCa | 0.0184 | 0.025 | 0.7044 | 7.0437 |
| CBGa | 0.0187 | 0.025 | 0.4890 | 4.8901 |
| CBDVA * | 0.0238 | 0.025 | 0.1953 | 1.9530 |
| CBD | 0.0175 | 0.025 | 0.1399 | 1.3993 |
| CBG | 0.0229 | 0.025 | 0.0736 | 0.7363 |
| CBC | 0.0213 | 0.025 | 0.0285 | 0.2851 |
| CBDV | 0.0204 | 0.025 | ND | ND |
| CBN | 0.0245 | 0.025 | ND | ND |
| CBT * | 0.021 | 0.0975 | ND | ND |
| THCV | 0.0242 | 0.025 | ND | ND |
| THCVA * | 0.0243 | 0.025 | ND | ND |
| Δ8-THC | 0.022 | 0.025 | ND | ND |
| Δ9-THC | 0.0207 | 0.025 | ND | ND |
| Total THC | | | 0.6177 | 6.1774 |
| Total | | | 20.7202 | 207.2025 |

| | |
|---------------------|------------------------------|
| ND Δ9-THC | 16.1978% Total CBD |
|---------------------|------------------------------|

Date Tested: 11/30/2021

Total THC = THCa * 0.877 + d9-THC

Total CBD = CBDa * 0.877 + CBD

LOQ = Limit of Quantitation; LOD = Limit of Detection; NT = Not Tested; ND = Not Detected. The reported result is based on a sample weight with the applicable moisture content for that sample;

* Denotes analytes pending ISO-17025 scope addition

Terpenes

Testing method: HS-GC-FID - SOP 201

| Analyte | LOD | LOQ | Results | Results |
|---------------------|-------|--------|---------------|----------------|
| | % | % | % | mg/g |
| β-Myrcene | 0.008 | 0.024 | 0.8427 | 8.4273 |
| β-Caryophyllene | 0.006 | 0.0173 | 0.2830 | 2.8302 |
| α-Pinene | 0.006 | 0.0175 | 0.1624 | 1.6239 |
| α-Humulene | 0.006 | 0.0173 | 0.1116 | 1.1159 |
| Terpinolene | 0.006 | 0.0168 | 0.1084 | 1.0838 |
| β-Pinene | 0.005 | 0.0147 | 0.0838 | 0.8377 |
| δ-Limonene | 0.005 | 0.0159 | 0.0692 | 0.6921 |
| Guaiol | 0.011 | 0.0334 | 0.0523 | 0.5232 |
| Linalool | 0.008 | 0.0228 | 0.0407 | 0.4070 |
| trans-Nerolidol | 0.007 | 0.0219 | 0.0391 | 0.3909 |
| Ocimene | 0.004 | 0.0109 | 0.0370 | 0.3704 |
| Caryophyllene Oxide | 0.029 | 0.0874 | <LOQ | <LOQ |
| α-Bisabolol | 0.01 | 0.0295 | <LOQ | <LOQ |
| Isopulegol | 0.009 | 0.0282 | <LOQ | <LOQ |
| δ-3-Carene | 0.005 | 0.016 | <LOQ | <LOQ |
| Camphene | 0.005 | 0.0163 | ND | ND |
| α-Terpinene | 0.005 | 0.0165 | ND | ND |
| Eucalyptol | 0.006 | 0.0175 | ND | ND |
| Geraniol | 0.007 | 0.0205 | ND | ND |
| p-Cymene | 0.005 | 0.0162 | ND | ND |
| γ-Terpinene | 0.006 | 0.0168 | ND | ND |
| Total | | | 1.8302 | 18.3024 |

Date Tested: 12/03/2021

| | | |
|--|---|--|
| 11.8% Moisture Moisture Analyzer SOP-103 Date Tested: 11/30/2021 | NT Water Activity Water Activity Meter SOP-102 | NT Foreign Matter Visual Inspection SOP-600 |
|--|---|--|



ISO / IEC 17025:2017 ACCREDITED
LABORATORY
Accreditation No. 73653

Neyajourab

Neya Jourabchian
Laboratory Director
01/05/2022

Mikaela Gutierrez

Mikaela Gutierrez
COA Review
01/05/2022

The values reported pertain only to the product tested. R&D Sample Only. Tested as-is/received from client. Unless otherwise stated all Laboratory Quality Control (LQC) samples performed within specifications established by the BCC in 16 CCR section 5730. Sample tested per CALIFORNIA CODE OF REGULATIONS, TITLE 16, DIVISION 42. BUREAU OF CANNABIS CONTROL.



12423 NE Whitaker Way
Portland, OR 97230
503-254-1794



Report Number: 21-014329/D004.R000
Report Date: 12/15/2021
ORELAP#: OR100028
Purchase Order:
Received: 12/08/21 12:29

Product identity: 826-24-1
Client/Metric ID:
Laboratory ID: 21-014329-0003

Summary

Potency:

| Analyte | Result (%) | | | |
|---------|------------|--|---------------------------------------|------|
| Δ8-THC† | 92.2 | | CBD Total | <LOQ |
| Δ8-THCV | 0.417 | | THC-Total | <LOQ |
| | | | (Reported in percent of total sample) | |

Residual Solvents:

All analytes passing and less than LOQ.

Pesticides:

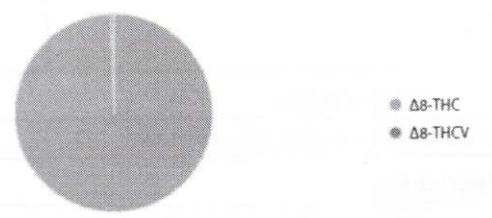
All analytes passing and less than LOQ.



Product identity: 826-24-1
Client/Metric ID:
Sample Date:
Laboratory ID: 21-014329-0003
Evidence of Cooling: No
Temp: 20.4 °C
Relinquished by: UPS

Sample Results

| Potency | Method J AOAC 2015 V98-6 (mod) | | | Units % | Batch: 2111034 | Analyze: 12/10/21 6:06:00 AM |
|----------------------------|--------------------------------|------------|--------|---------|----------------|------------------------------|
| Analyte | As Received | Dry weight | LOQ | Notes | | |
| CBC | < LOQ | | 0.0857 | | | |
| CBC-A† | < LOQ | | 0.0857 | | | |
| CBC-Total† | < LOQ | | 0.161 | | | |
| CBD | < LOQ | | 0.0857 | | | |
| CBD-A | < LOQ | | 0.0857 | | | |
| CBD-Total | < LOQ | | 0.161 | | | |
| CBDV† | < LOQ | | 0.0857 | | | |
| CBDV-A† | < LOQ | | 0.0857 | | | |
| CBDV-Total† | < LOQ | | 0.160 | | | |
| CBE† | < LOQ | | 0.0857 | | | |
| CBG† | < LOQ | | 0.0857 | | | |
| CBG-A† | < LOQ | | 0.0857 | | | |
| CBG-Total | < LOQ | | 0.160 | | | |
| CBL† | < LOQ | | 0.0857 | | | |
| CBL-A† | < LOQ | | 0.0857 | | | |
| CBL-Total† | < LOQ | | 0.161 | | | |
| CBN | < LOQ | | 0.0857 | | | |
| CBT† | < LOQ | | 0.0857 | | | |
| Δ8-THC† | 92.2 | | 0.857 | | | |
| Δ8-THCV | 0.417 | | 0.0857 | | | |
| Δ9-THC | < LOQ | | 0.0857 | | | |
| THC-A | < LOQ | | 0.0857 | | | |
| THC-Total | < LOQ | | 0.161 | | | |
| THCV† | < LOQ | | 0.0857 | | | |
| THCV-A† | < LOQ | | 0.0857 | | | |
| THCV-Total† | < LOQ | | 0.160 | | | |
| Total Cannabinoids† | 92.6 | | | | | |





12423 NE Whitaker Way
 Portland, OR 97230
 503-254-1794



Report Number: 21-014329/D004.R000
Report Date: 12/15/2021
ORELAP#: OR100028
Purchase Order:
Received: 12/08/21 12:29

| Solvents | | | | | | Residual Solvents by GC/MS | | | | | |
|----------------------------|--------|--------|--------|------|--------|-----------------------------------|------------|-------|---------|---------|-------------------|
| Analyte | Method | Result | Limits | LOQ | Status | Analyte | Units µg/g | Batch | 2111058 | Analyze | 12/13/21 09:43 AM |
| 1,4-Dioxane | < LOQ | 380 | 100 | pass | | 2-Butanol | < LOQ | 5000 | 200 | pass | |
| 2-Ethoxyethanol | < LOQ | 160 | 30.0 | pass | | 2-Methylbutane (Isopentane) | < LOQ | | 200 | | |
| 2-Methylpentane | < LOQ | | 30.0 | | | 2-Propanol (IPA) | < LOQ | 5000 | 200 | pass | |
| 2,2-Dimethyl butane | < LOQ | | 30.0 | | | 2,2-Dimethylpropane (neo-pentane) | < LOQ | | 200 | | |
| 2,3-Dimethyl butane | < LOQ | | 30.0 | | | 3-Methylpentane | < LOQ | | 30.0 | | |
| Acetone | < LOQ | 5000 | 200 | pass | | Acetonitrile | < LOQ | 410 | 100 | pass | |
| Benzene | < LOQ | 2.00 | 1.00 | pass | | Butanes (sum) | < LOQ | 5000 | 400 | pass | |
| Cyclohexane | < LOQ | 3880 | 200 | pass | | Ethyl acetate | < LOQ | 5000 | 200 | pass | |
| Ethyl benzene | < LOQ | | 200 | | | Ethyl ether | < LOQ | 5000 | 200 | pass | |
| Ethylene glycol | < LOQ | 620 | 200 | pass | | Ethylene oxide | < LOQ | 50.0 | 20.0 | pass | |
| Hexanes (sum) | < LOQ | 290 | 150 | pass | | Isopropyl acetate | < LOQ | 5000 | 200 | pass | |
| Isopropyl benzene (Cumene) | < LOQ | 70.0 | 30.0 | pass | | m,p-Xylene | < LOQ | | 200 | | |
| Methanol | < LOQ | 3000 | 200 | pass | | Methylene chloride | < LOQ | 600 | 60.0 | pass | |
| Methylpropane (Isobutane) | < LOQ | | 200 | | | n-Butane | < LOQ | | 200 | | |
| n-Heptane | < LOQ | 5000 | 200 | pass | | n-Hexane | < LOQ | | 30.0 | | |
| n-Pentane | < LOQ | | 200 | | | o-Xylene | < LOQ | | 200 | | |
| Pentanes (sum) | < LOQ | 5000 | 600 | pass | | Propane | < LOQ | 5000 | 200 | pass | |
| Tetrahydrofuran | < LOQ | 720 | 100 | pass | | Toluene | < LOQ | 890 | 100 | pass | |
| Total Xylenes | < LOQ | | 400 | | | Total Xylenes and Ethyl benzene | < LOQ | 2170 | 600 | pass | |

www.columbialaboratories.com

Test results relate only to the parameters tested and to the samples as received by the laboratory. Test results meet all requirements of NELAP and the Columbia Laboratories quality assurance plan unless otherwise noted. This report shall not be reproduced, except in full, without the written consent of this laboratory. Samples will be retained for a maximum of 30 days from the receipt date unless prior arrangements have been made.

Testing in accordance with: OAR 333-007-0400 OAR 333-007-0410 OAR 333-007-0430



12423 NE Whitaker Way
 Portland, OR 97230
 503-254-1794

Report Number: 21-014329/D004.R000
Report Date: 12/15/2021
ORELAP#: OR100028
Purchase Order:
Received: 12/08/21 12:29



| Pesticides | | | | | | | | | | | |
|--|--------|--------|-------|--------|-------|---------------------|--------|--------|-------|--------|-------|
| Method AOAC 2007.01 & EN 15662 (mod) Units mg/kg Batch 2111056 Analyze 12/13/21 09:31 AM | | | | | | | | | | | |
| Analyte | Result | Limits | LOQ | Status | Notes | Analyte | Result | Limits | LOQ | Status | Notes |
| Abamectin | < LOQ | 0.50 | 0.250 | pass | | Acephate | < LOQ | 0.40 | 0.250 | pass | |
| Acequinocyl | < LOQ | 2.0 | 1.00 | pass | | Acetamiprid | < LOQ | 0.20 | 0.100 | pass | |
| Aldicarb | < LOQ | 0.40 | 0.200 | pass | | Azoxystrobin | < LOQ | 0.20 | 0.100 | pass | |
| Bifenazate | < LOQ | 0.20 | 0.100 | pass | | Bifenthrin | < LOQ | 0.20 | 0.100 | pass | |
| Boscalid | < LOQ | 0.40 | 0.200 | pass | | Carbaryl | < LOQ | 0.20 | 0.100 | pass | |
| Carbofuran | < LOQ | 0.20 | 0.100 | pass | | Chlorantraniliprole | < LOQ | 0.20 | 0.100 | pass | |
| Chlorfenapyr | < LOQ | 1.0 | 0.500 | pass | | Chlorpyrifos | < LOQ | 0.20 | 0.100 | pass | |
| Clofentezine | < LOQ | 0.20 | 0.100 | pass | | Cyfluthrin | < LOQ | 1.0 | 0.500 | pass | |
| Cypermethrin | < LOQ | 1.0 | 0.500 | pass | | Daminozide | < LOQ | 1.0 | 0.500 | pass | |
| Diazinon | < LOQ | 0.20 | 0.100 | pass | | Dichlorvos | < LOQ | 1.0 | 0.500 | pass | |
| Dimethoate | < LOQ | 0.20 | 0.100 | pass | | Ethoprophos | < LOQ | 0.20 | 0.100 | pass | |
| Etofenprox | < LOQ | 0.40 | 0.200 | pass | | Etozazole | < LOQ | 0.20 | 0.100 | pass | |
| Fenoxycarb | < LOQ | 0.20 | 0.100 | pass | | Fenpyroximate | < LOQ | 0.40 | 0.200 | pass | |
| Fipronil | < LOQ | 0.40 | 0.200 | pass | | Fonicamid | < LOQ | 1.0 | 0.400 | pass | |
| Fludioxonil | < LOQ | 0.40 | 0.200 | pass | | Hexythiazox | < LOQ | 1.0 | 0.400 | pass | |
| Imazalil | < LOQ | 0.20 | 0.100 | pass | | Imidacloprid | < LOQ | 0.40 | 0.200 | pass | |
| Kresoxim-methyl | < LOQ | 0.40 | 0.200 | pass | | Malathion | < LOQ | 0.20 | 0.100 | pass | |
| Metalaxyl | < LOQ | 0.20 | 0.100 | pass | | Methiocarb | < LOQ | 0.20 | 0.100 | pass | |
| Methomyl | < LOQ | 0.40 | 0.200 | pass | | MGK-264 | < LOQ | 0.20 | 0.100 | pass | |
| Myclobutanil | < LOQ | 0.20 | 0.100 | pass | | Naled | < LOQ | 0.50 | 0.250 | pass | |
| Oxamyl | < LOQ | 1.0 | 0.500 | pass | | Paclobutrazole | < LOQ | 0.40 | 0.200 | pass | |
| Parathion-Methyl | < LOQ | 0.20 | 0.200 | pass | | Permethrin | < LOQ | 0.20 | 0.100 | pass | |
| Phosmet | < LOQ | 0.20 | 0.100 | pass | | Piperonyl butoxide | < LOQ | 2.0 | 1.00 | pass | |
| Prallethrin | < LOQ | 0.20 | 0.200 | pass | | Propiconazole | < LOQ | 0.40 | 0.200 | pass | |
| Propoxur | < LOQ | 0.20 | 0.100 | pass | | Pyrethrin I (total) | < LOQ | 1.0 | 0.500 | pass | |
| Pyridaben | < LOQ | 0.20 | 0.100 | pass | | Spinosad | < LOQ | 0.20 | 0.100 | pass | |
| Spiromesifen | < LOQ | 0.20 | 0.100 | pass | | Spirotetramat | < LOQ | 0.20 | 0.100 | pass | |
| Spiroxamine | < LOQ | 0.40 | 0.200 | pass | | Tebuconazole | < LOQ | 0.40 | 0.200 | pass | |
| Thiacloprid | < LOQ | 0.20 | 0.100 | pass | | Thiamethoxam | < LOQ | 0.20 | 0.100 | pass | |
| Trifloxystrobin | < LOQ | 0.20 | 0.100 | pass | | | | | | | |

www.columbialaboratories.com

Test results relate only to the parameters tested and to the samples as received by the laboratory. Test results meet all requirements of NELAP and the Columbia Laboratories quality assurance plan unless otherwise noted. This report shall not be reproduced, except in full, without the written consent of this laboratory. Samples will be retained for a maximum of 30 days from the receipt date unless prior arrangements have been made.

Testing in accordance with: OAR 333-007-0400 OAR 333-007-0410 OAR 333-007-0430