



## Whole Organix

Houston, TX 77018  
aaron.reyes@wholeorganix.com

## Sample 569-061722-002

"Focus" OG Kush

Batch/Lot # 258222C4

Sample Submitted: 06-17-2022; Report Date: 06-18-2022

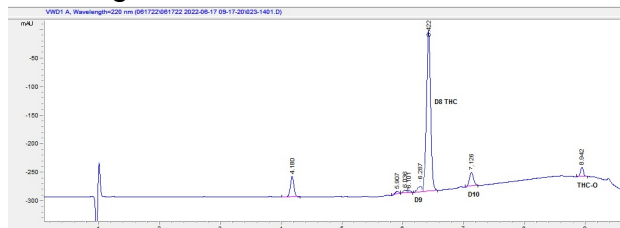
nullSample Unit Size: 2.00 g

## "Focus" OG Kush

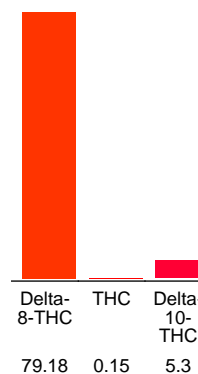
Distillate

Batch/Lot # 258222C4

### Chromatogram



### Cannabinoid Profile



### Cannabinoid Profile by HPLC

**0.15%**  
Calculated THC Yield

**0.00%**  
Calculated CBD Yield

**84.63%**  
Total Cannabinoids

Cannabinoid	% wt	mg/unit
Delta-8-THC	79.18	1583.6
THC	0.15	3.0
Delta-10-THC	5.3	106.0
<b>Total Cannabinoids</b>	<b>84.63</b>	<b>1692.6</b>
<b>Calculated THC Yield</b>	<b>0.15</b>	<b>3.00</b>
<b>Calculated CBD Yield</b>	<b>0.00</b>	<b>0.00</b>

Calculated Maximum THC Yield = THC + 0.877 \* THCA  
Calculated Maximum CBD Yield = CBD + 0.877 \* CBDA

**Notes:** THC-O 4.32% based on percentage in the chromatogram; no reference standard is available.

**Marin Analytics, LLC**  
250 Bel Marin Keys Blvd, Suite D4  
Novato, CA 94949  
415-936-6477 / sarabiancalana1@gmail.com

*Sara Biancalana*  
**Sara Biancalana**  
Chief Scientist

This sample has been tested by Marin Analytics, LLC using valid testing methodologies and a quality system. Values reported relate only to the sample tested. Marin Analytics, LLC makes no claims as to the efficacy, safety or other risks associated with any detected or non-detected levels of any compounds reported herein. This Certificate shall not be reproduced except in full, without the written approval of Marin Analytics, LLC.